

A. Removal:

1. Shift to "D" position, then turn off the car.



2. Hold the knob and pull it upward.



3. Carefully remove the leather.

Note there are hooks at some positions

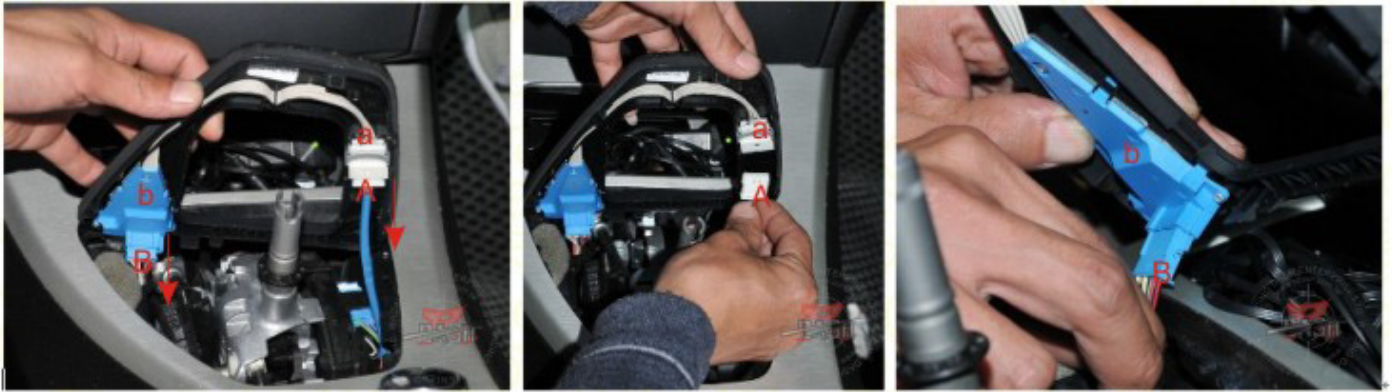


4. Carefully remove the gear frame.



Note there are clips around the edge.

5. Disconnect "A" from "a" and "B" from "b".



B. Overview of all connectors and sockets



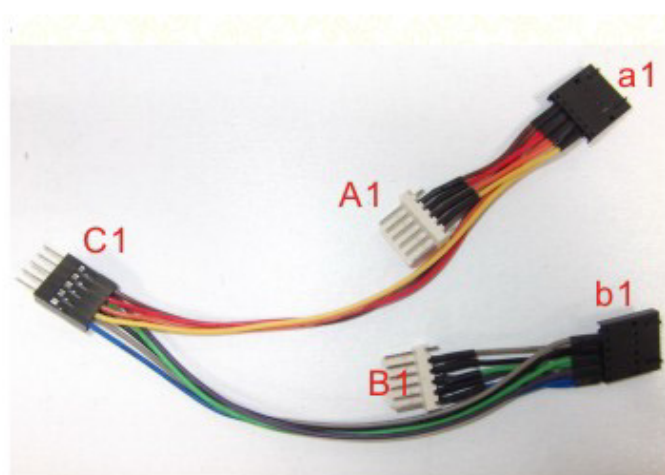
Back side of gear frame



Shift knob



Wire harness

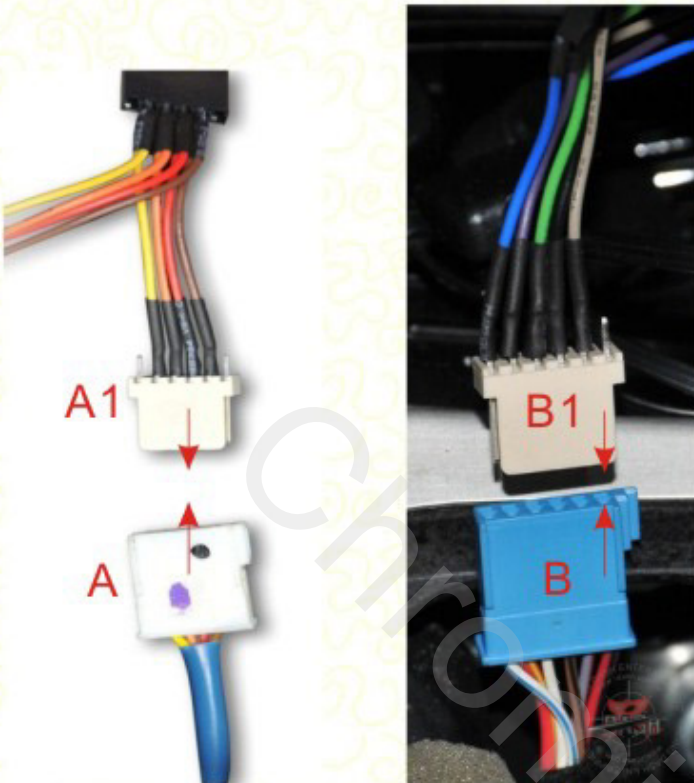


- A1 – A**
- B1 – B**
- a1 – a**
- b1 – b**
- C1 – C**

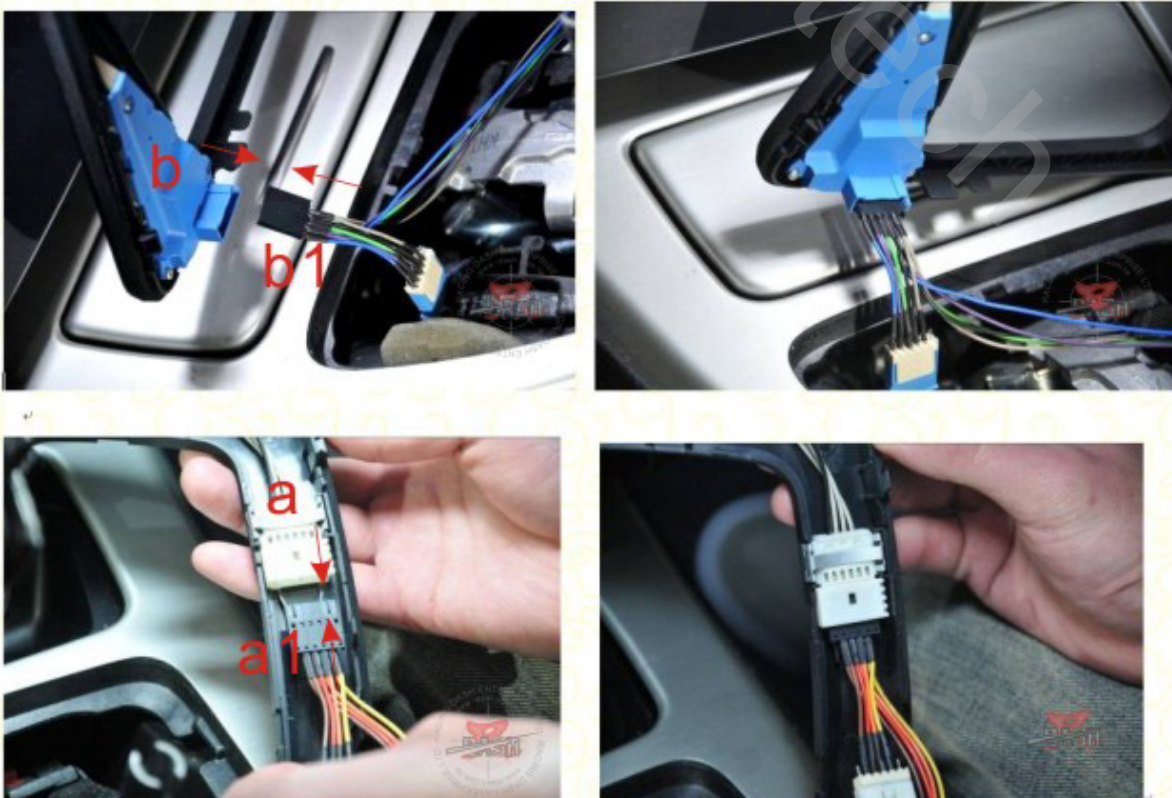
C. Installation

3/4

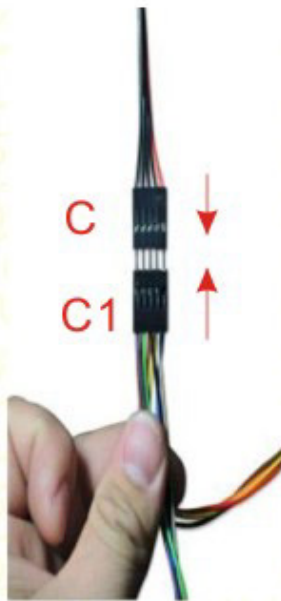
1. Connect wire harness "A1" to "A" and "B1" to "B"



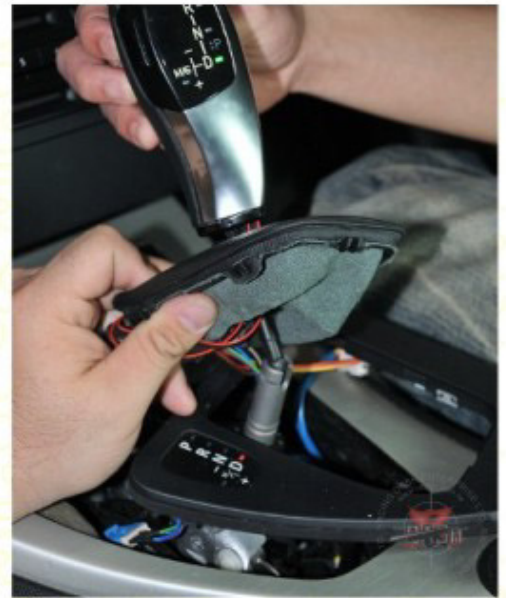
2. Connect "b1" to "b", and "a1" to "a"



3. Connect "C1" and "C", then the gear "D" position will light up.



4. Insert the knob into the shaft.



5. Palm on the top of knob, strike down with fist hardly (you shall hear a "click" sound when it is right in place).



6. Sift the gear knob to P-R-N-D-M/S positions, turn on the parking light see if every lights function normally. If yes, then you can install back the frame and leather and then the installation completed.

